

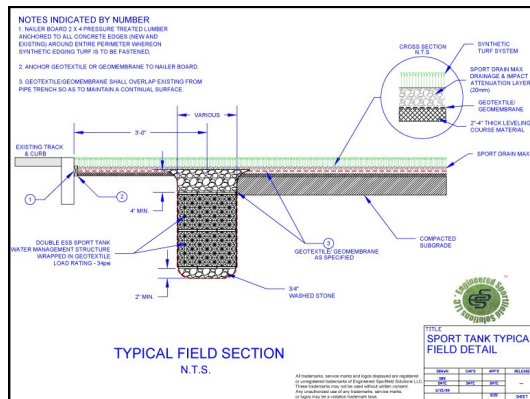
IMPACT PROTECTION TECHNOLOGY™ (IPT)

No matter what the sport, every type of sport field has one thing in common; the playing field needs an engineered system of drainage to maintain a safe and healthy playing surface. Poor drainage can cause a the playing surface to become unusable or unsafe. ESS products and service are designed and implemented to provide safety and performance for you sport field project.



IPT ADVANTAGES

- Superior Permeability
- Exceptional G_{MAX} Shock Attenuation
- Easy Transport and Installation
- Conforms to field subgrade
- Increases the life of the turf system
- Safe and long-lasting playing field
- Suitable base for any type of outdoor synthetic surface
- Environmentally Friendly
- Cost effective replacement of natural materials.



ADHESIVES

Turf Claw Adhesives for the Installation of synthetic turf systems

- Provides superior seam strength with a structural grab of 2-4 hours and a Full Cure of 24 hours
- Quick Green Strength with Little to No Foaming
- No Solvents, No VOCs, which means Reduced Freight Costs
- No Mixing Necessary
- Green colored to blend with turf
- Easy Spreading for Faster Application



Repair of synthetic turf systems using SL-420C

- Repair a seam in as little as 5 minutes before a game
- Designed, tested, and implemented specifically for the rigors of synthetic turf
- No VOCs, Freight Friendly
- Superior Strength
- Mix-On-Demand Technology: No Mixing, No Mess!
- Simple to use, anyone can repair seams no experience required
- No waste
- Green colored to blend with turf
- Tacks in 5 mins, Cures in 10 mins with a Full Cure Time of 24 hours



March, 2011

ENGINEERED SPORTFIELD SOLUTIONS, LLC.

4223 Rock Run Road
Havre De Grace, Maryland 21078-1236

Phone: 410-878-6341

Fax: 410-734-4129

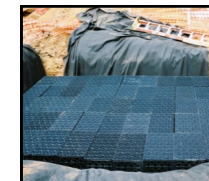
info@engineersportfield.com

ENGINEERED SPORTFIELD SOLUTIONS

**INNOVATIONS
THAT PROTECT
TODAY'S ATHLETES**



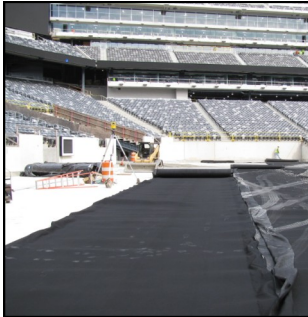
Engineered Sportfield Solutions promote engineered geosynthetic technologies that specifically target synthetic and natural turf projects.



About ESS

With 30-years experience developing and implementing synthetic aggregate systems, Engineered Sportfield Solutions has resolved the challenges typically associated with designing and building both synthetic and natural drainage layers for sport fields throughout North America. ESS is the only Engineered Sportfield Solution™ that provides **Best Practice** solutions, while delivering proprietary product technologies that can be used with any natural or synthetic turf. ESS enhancing its products enhance performance, while also offering superior impact protection, energy absorption and longer-lasting performance that is suitable for any playing surface.

Engineered Sportfield Solutions provide products and services that “engineer” safety by combining the most recent technological innovations and applications with turn-key design engineering principles.



Safe and Sanitary

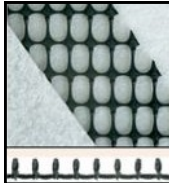


Natural Turf



Sport Drain_{MAX}

Placed below the growing media, Sport Drain_{MAX} is a patent-pending, unique synthetic replacement for a natural drainage stone layer. Sport Drain_{MAX} is manufactured from 95% recycled HDPE. It is designed to remove a 6"/hour rainfall event and will substantially increase long-term field performance.



Sportflow

Placed below the growing media, Sportflow maintains its optimum hydraulic properties, while far surpassing natural drainage even under construction loading. This patented technology provides exceptional quality controlled drainage material within your synthetic turf system. It can be placed in a standard herringbone or full field installation.



Turfgrids

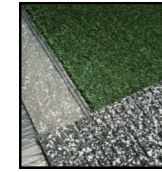
Placed directly into your growing media or incorporated into the sod. Turfgrids are safe, non-toxic polypropylene fibers that are incorporated into the soil to reinforce root-zone mixtures that benefit all types of turf grass. The fibers intertwine with the soil to become, in effect, a synthetic root-zone.



ENGINEERED SPORTFIELD SOLUTIONS

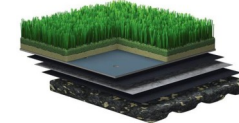
ESS can help provide you and your customers with turn-key solutions from conception, through construction, to completion for synthetic and natural turf fields. We strive to integrate design and materials to deliver improved construction efficiency and improved performance in a technically competent, industrially innovative manner.

Synthetic Turf



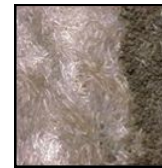
Sport Drain_{MAX}

Sport Drain_{MAX} is a patented-pending synthetic replacement for natural drainage stone layer. Placed directly under synthetic turf, Sport Drain_{MAX} will provide impact attenuation (GMAX) and drainage in one easily installed material. Sport is manufactured from 95% recycled HDPE. It is designed to remove 6"/hour rainfall event and will substantially increase long-term field performance.



Envirofill

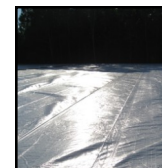
Envirofill sanitary infill is the only product available that was specifically developed as infill for any type of synthetic turf system. It is a color-coated, sanitary, Silicon Dioxide (SiO₂) bead that provides the cleanest and safest infill material available in the marketplace today. Envirofill beads are up to 50% cooler than other standard infill material, thus significantly reducing surface heat. Envirofill will provide consistent impact absorption throughout the life of any indoor or outdoor playing surface.



SportGrids

SportGrids are developed specifically to reinforce and provide sub-grade stabilization directly under synthetic turf systems. The SportGrids line of reinforcing fibers has been designed to maximize shear strength enhancement of natural soils. SportGrids can reinforce all soil types, from fatty clays to sugar sands. These products have been

extensively lab-tested and field-proven to give consistent long-term performance.



Protector Series Membranes

ESS Protector Liners are impermeable membranes manufactured to be strong, yet flexible to protect your sub-grade. They have been designed, tested, and utilized specifically for synthetic turf applications, using synthetic or natural aggregate base layers. Their intent is minimize heat build-up, expansion and

contraction of the impermeable membrane – critical to the success of your synthetic turf system.



Sport Tank

After a rain event, Sport Tank will allow you to completely manage storm water. It can be used as storage detention, storage retention and/or infiltration system. Imagine using storm water collected from your synthetic field to irrigate your natural landscaping. This can be easily achieved with by using Sport Tank within your synthetic turf system.

www.engineersportfield.com