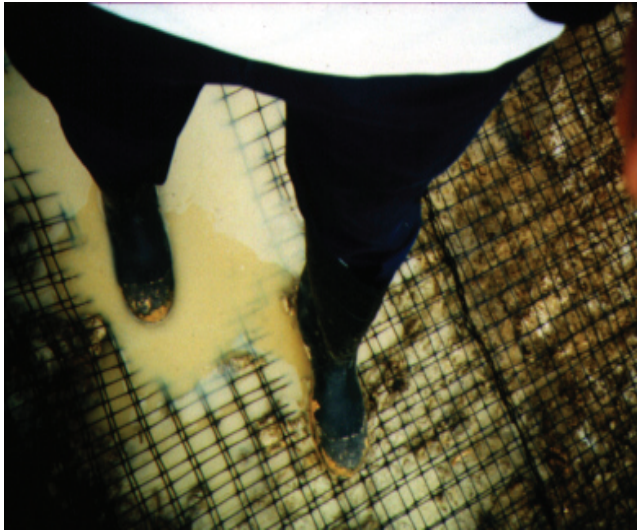




**TENAX MULTILAYER GEOGRIDS
FOR WEAK SOIL STABILIZATION &
FOR BASE REINFORCEMENT**

TENAX[®]

TENAX MULTILAYER GEOGRIDS: STABILIZATION, REINFORCEMENT AND SEPERATION



SOFT SOIL STABILIZATION

Geogrid soft soil stabilization techniques provide superior solutions to conventional techniques such as deep undercutting and chemical stabilization by reducing construction time, cost and difficulties and often providing solutions where no conventional method could be applied.

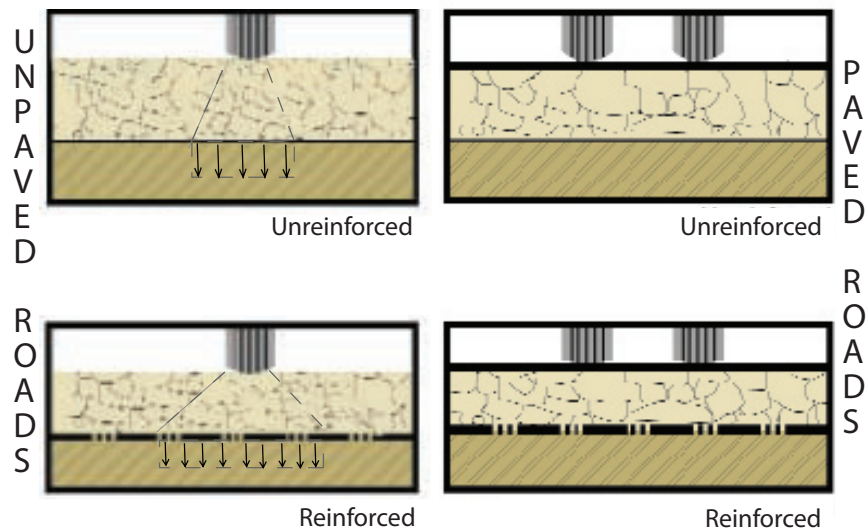
Tenax MS geogrids have considerably more tensile elements than conventional geogrids, therefore, they are able to interact more effectively with the soil. The increased interaction with soil greatly improves the pull-out resistance of the geogrid in a wide range of soils.

Furthermore, the multiple layers of Tenax MS geogrids provide an increased cross-sectional thickness as compared to a single-layer geogrid. This increase in profile allows for increased separation between the weak subgrade soil and fill material.



BASE REINFORCEMENT

In base reinforcement applications such as paved or unpaved roads, geogrids are used to provide reinforcement and confinement to base course materials. Typically, the fill material used in base reinforcement is a quality granular material with specific structural characteristics. This high quality granular fill can also be very expensive. By incorporating Tenax high tensile strength and high junction efficiency, multiple layered polypropylene geogrids establish an effective stress transfer mechanism between the geogrid and surrounding soils. Therefore, lateral movement of the base course is prevented and applied loads are distributed to a wider area. As a result, the required thickness of the granular fill can be significantly reduced, translating into considerable cost savings.





MS220

Texas DOT/Brazos Co. SH6



MS330

Pennsylvania Employee Credit Union, base reinforcement - Harrisburg, PA



MS500

Lagoon clay liner reinforcement - Nebraska



MS220

Base reinforcement - Wichita, Kansas



MS220B

M&T Bank (Baltimore Ravens) Stadium - Baltimore, Maryland



MS330

Mead Paper Mill closure stabilization - Phenix, Alabama



MS220

Texas DOT/Titus Co. Base reinforcement

MEMBERSHIP AFFILIATIONS INCLUDE



TENAX Corporation
Geosynthetics Division
 4800 East Monument Street
 Baltimore, Maryland 21205

1.800.356.8495
www.tenax.net